

MATERIAL AND FINISHES:

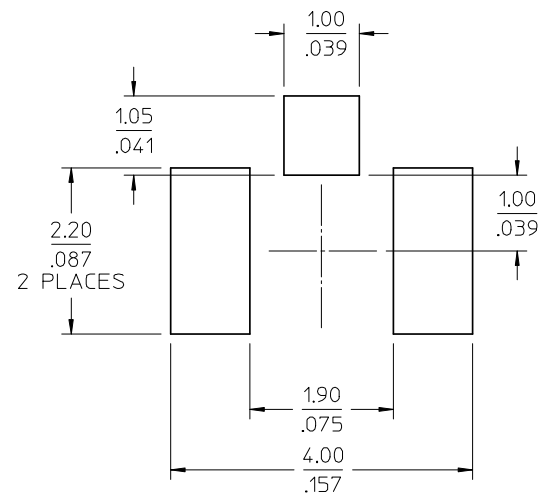
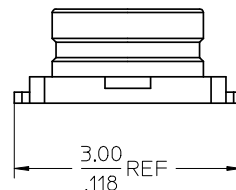
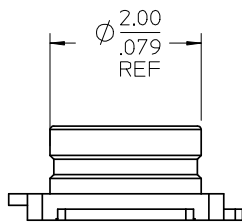
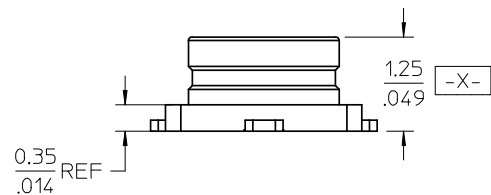
BASE: LCP  
COLOR: IVORY

CONTACT: PHOSPHOR BRONZE(JIS 5191-SH)  
PLATED GOLD

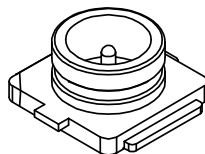
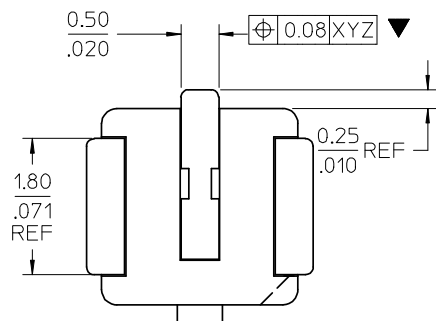
OUTER CONTACT PHOSPHOR BRONZE(JIS 5191-SH)  
PLATED GOLD

NOTE : OPTION TO NEW TOOLING FOR IMPROVING ORIENTATION OF PACKING

WILL WITHSTAND REFLOW TEMPERATURE OF 265 DEG C ±5 DEG



RECOMMEND PCB LAYOUT



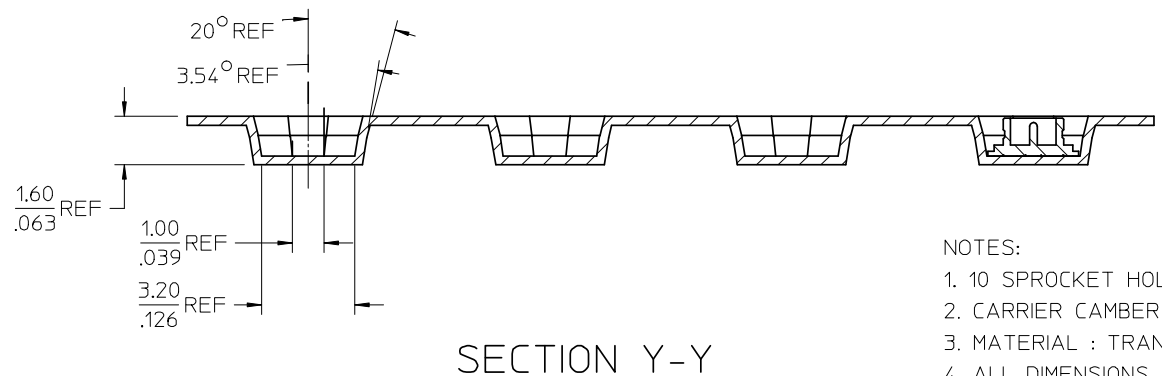
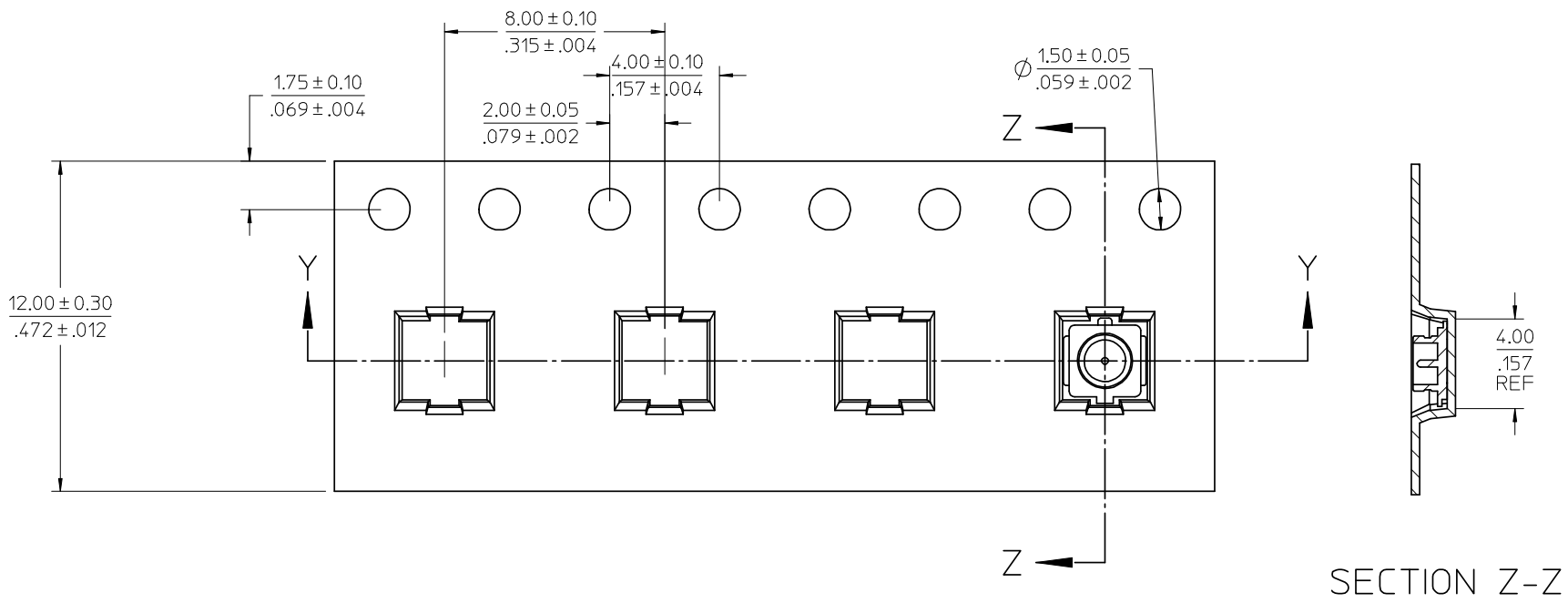
73412-0114	TAPE AND REEL (1K/REEL)
73412-0112	73412-0110, 10 PIECES PER BAG IN TAPE
73412-0110	TAPE AND REEL ( 5K/REEL)
PART NO.	PACKAGING

CHG: ADD PART/NO. 73412-0114 FOR PACKAGING 1K/REEL EC NO: URF2009-0035 DRWN:YCHENG 2008/07/31 CHKD: 2008/08/04 APPR:MHUANG 2008/08/05	QUALITY SYMBOLS
	▼=0 ▽=0
DESCRIPTION	REV
B2	

GENERAL TOLERANCES (UNLESS SPECIFIED)	
mm	INCH
4 PLACES ± .01	± .0004
3 PLACES ± .015	± .0006
2 PLACES ± 0.25	± .010
1 PLACE ± 0.13	± .005
ANGULAR ± 2 °	
DRAFT WHERE APPLICABLE MUST REMAIN WITHIN DIMENSIONS	

DIMENSION STYLE	
MM/IN	
DRAWN BY	DATE
DARRY	2003/1/27
CHECKED BY	DATE
JOHNSON	2003/1/27
APPROVED BY	DATE
MISEN	2003/1/27
MATERIAL NO.	
SEE TABLE	
SIZE	
C	

SCALE	DESIGN UNITS	THIRD ANGLE PROJECTION
	METRIC	
TITLE		
MICRO COAXIAL CONNECTOR RECEPTACLE VERTICAL		
MOLEX INCORPORATED		
DOCUMENT NO.	SHEET NO.	
SD-73412-011	1 OF 2	
THIS DRAWING CONTAINS INFORMATION THAT IS PROPRIETARY TO MOLEX INCORPORATED AND SHOULD NOT BE USED WITHOUT WRITTEN PERMISSION		



- NOTES:
- 10 SPROCKET HOLE PITCH CUMULATIVE TOLERANCE  $\pm 0.20$ mm
  - CARRIER CAMBER IS WITH 1mm IN 1000mm
  - MATERIAL : TRANSPARENT POLYSTYRENE ALLOY
  - ALL DIMENSIONS MEET EIA-481-1 REQUIREMENT
  - THICKNESS:  $0.30 \pm 0.05$ mm
  - PACKING LENGTH PER 22" REEL (122.5 Meters)
  - COMPONENT LOAD PER 13" REEL (5,000 PCS)

A	B2	CHG: SEE SHEET 1 EC NO: URF2009-0035 DRWN:YCHENG 2008/07/31 CHKD: 2008/08/04 APPR:MHUANG 2008/08/05	QUALITY SYMBOLS ▽=0 ▽=0	GENERAL TOLERANCES (UNLESS SPECIFIED)		DIMENSION STYLE		SCALE	DESIGN UNITS	THIRD ANGLE PROJECTION			
						MM/IN			METRIC				
						DRAWN BY	DATE	TITLE					
						CHECKED BY	DATE	MICRO COAXIAL CONNECTOR RECEPTACLE VERTICAL					
A	B2			ANGULAR $\pm 2^\circ$		APPROVED BY	DATE	MOLEX INCORPORATED		SHEET NO.			
				DRAFT WHERE APPLICABLE MUST REMAIN WITHIN DIMENSIONS		MISEN	2003/1/27	MOLEX INCORPORATED		DOCUMENT NO.		SD-73412-011	
						SEE SHEET 1				2 OF 2			
THIS DRAWING CONTAINS INFORMATION THAT IS PROPRIETARY TO MOLEX INCORPORATED AND SHOULD NOT BE USED WITHOUT WRITTEN PERMISSION													